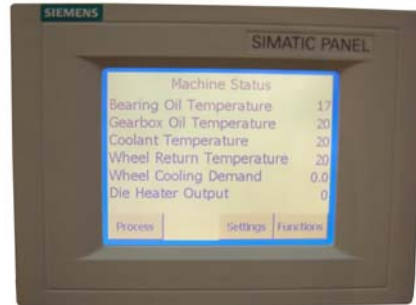


Standard PLC Control System

The Conform™ / Conklad™ line is supplied as standard with a Siemens PLC Control System with a number of analogue and digital input / output modules. These modules are used to provide Machine Status and Protection for typical parameters such as:

- Bearing Oil Temperature
- Gearbox Oil Temperature
- Cooling Water Temperature
- Cooling Water Return Temperature
- Abutment Temperature
- Die Chamber Temperature
- Wheel Speed
- Motor Current
- Product Speed



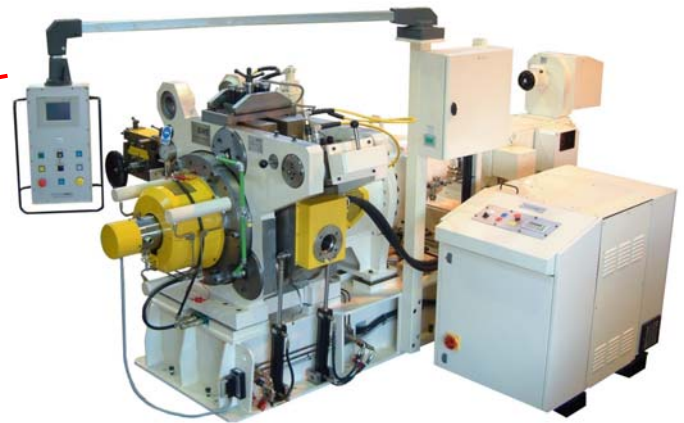
Numeric Touch-Screen Panel

The PLC is programmed with BWE's standard Conform functions. A menu-driven access is used for monitored process measurements, operator settings and (under password protection) system calibration and configuration. Optional 'in-line' product measurement / detection gauges and devices can be controlled by the same unit.



Control Station

The 'Numeric Touch-Screen Panel' is built into the 'Operator's Control Station', which is fixed to a 'Swinging Pendant' pivoted to the top of the machine, enabling the operator to control the machine from a number of local positions. All control functions and displays are available in Dual Language.



Swinging Pendant

Optional Control & Monitoring

Depending on the application and customer preference, BWE's established CDS software (Conform Data System – please refer to separate Technical Bulletin) for line monitoring, data logging and tabular / graphical displays, can be purchased and connected via a high-speed Ethernet interface to the customer's PC. BWE offer the same as an option within a purpose built Control Desk complete with a protected Flat-Screen Monitor. The latest version of CDS is now fully network compatible making it easy to share production data across a local network.



Optional Control Desk & Monitor

- CONFORM and CONKLAD are Trademarks of BWE Ltd -

0205

Cold Welding · Continuous Extrusion · Continuous Cladding · Continuous Sheathing



Beaver Industrial Estate · Ashford · Kent · England
Tel: +44 (0)1233 627736 · Fax: +44 (0)1233 630670
Email: mail@bwe.co.uk · www.conform.com