

CONFORM™ CONKLAD™

Good Economics

The die chamber system, developed by BWE more than 20 years ago, has long been established as the best way of receiving the metal flow and applying it to the extrusion die or die/mandrel combination.

The die chamber also provides a convenient method for setting the tooling off-line and, when combined with BWE's pivoting shoe arrangement, allows rapid die changing.

Because of the complex shape and very tight tolerances die chambers are relatively expensive so to improve the process economics BWE has developed a range of replaceable inserts.

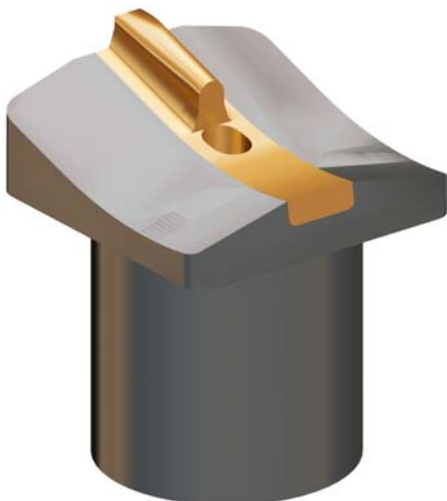
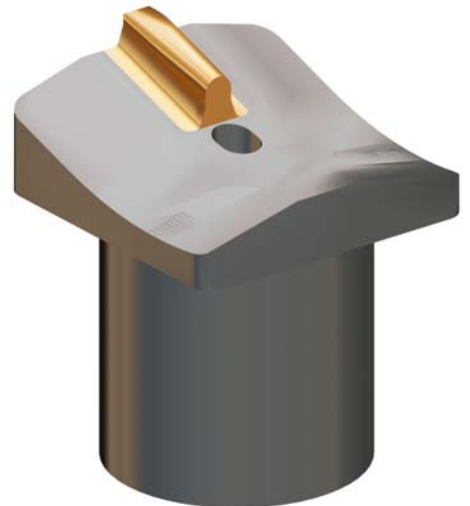
The inserted part depends on the material being extruded. Pure aluminium and soft aluminium alloys tend to wear the seal area in front of the abutment. With copper the abutment itself takes most of the punishment while abrasive alloys wear both the seal and the abutment.

The basic types are:

- Replaceable Seal
- Replaceable Abutment
- Replaceable Seal + Abutment

The insert material is selected for wear properties, hardness or high temperature strength depending on the application and is usually treated with a low friction coating.

Tooling cost is dramatically reduced and average flash is also reduced because the seal can be replaced more frequently.



Features

- Improves economics without sacrificing performance.
- Replaceable part to suit extruded material.
- Low friction coating.
- Long life.
- Low cost.

- CONFORM and CONKLAD are Trademarks of BWE Ltd -

Ref: 0304

Cold Welding · Continuous Extrusion · Continuous Cladding · Continuous Sheathing



Beaver Industrial Estate · Ashford · Kent · England
Tel: +44 (0)1233 627736 · Fax: +44 (0)1233 630670
Email: mail@bwe.co.uk · www.conform.com