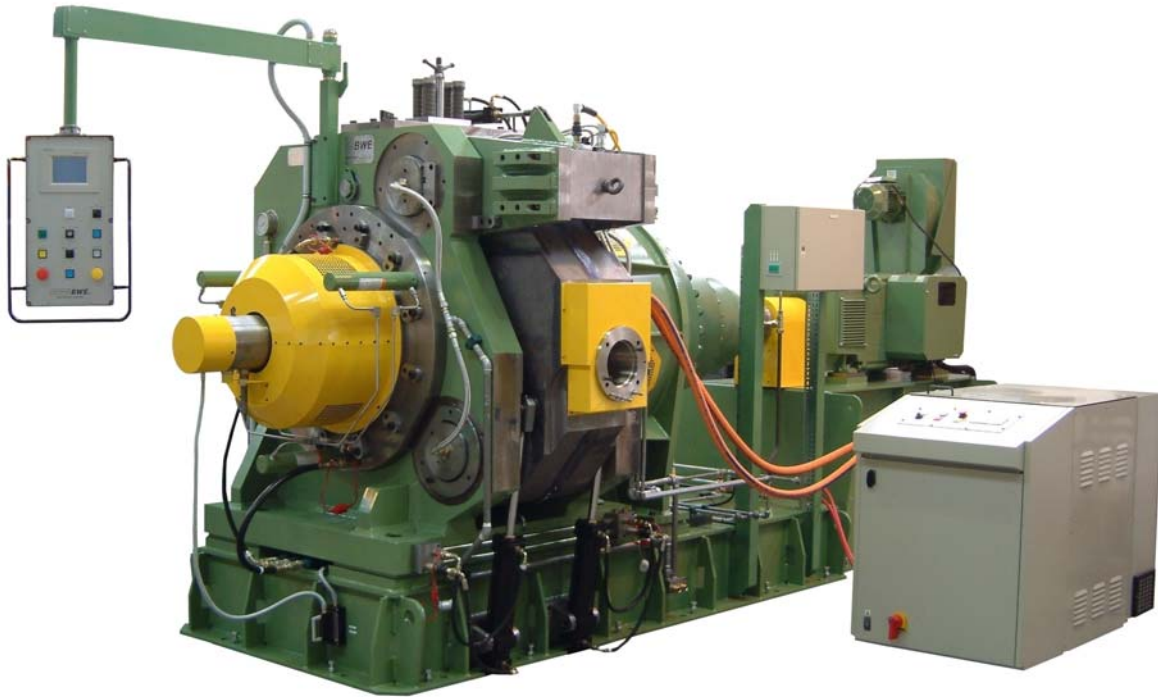


CONFORM™

Continuous Extrusion Machine

Conform 550i



The **Conform 550i** machine is the largest of the BWE range and is capable of extruding large products such as **Copper Bus Bars / Copper Sections and Large Aluminium Sections / Profiles**.

The basic machine construction is based on the proven BWE design, which has an excellent record of reliable operation over many years of service. Extreme rigidity, the ability to operate at high extrusion pressures and separately controlled wheel and die temperatures ensure that tooling clearances remain optimal throughout long periods of continuous operation (**machine adjustments not required during operation**).

Induction Heated Tooling and Automatic Wheel Cooling Systems ensure rapid pre-heat to the correct starting temperature and maintain optimum extrusion conditions during production without operator intervention. Overall economics are further improved by a **Low-Cost Wheel System** that utilises a special pre-load arrangement to achieve significantly more tonnage than competitive wheel systems and **Insert Tooling** that allows the wearing surface of the main tooling component, the die chamber, to be replaced at minimal cost.

The standard package includes a 400kW motor and drive system, a Siemens S7-200 PLC, touch-screen control / display and the appropriate ancillary equipment to complete the line. Options include a Control Console with a full graphic display for process monitoring and data logging. To help reduce capital cost, BWE can assist with local procurement of some ancillary equipment.

Performance:

- Rapid Pre- Heating
- Automatic Wheel Cooling
- Rigid Construction
- Long-term Stability

Economy:

- Low Cost Wheel System
- Insert Tooling
- High Reliability
- Low Capital Cost

Specification

Wheel Diameter (mm): 550
Rated Power (kW) 400/500

Min. Aluminium Feedstock (mm): 12.0
Max. Aluminium Feedstock (mm): 25.4
Min. Copper Feedstock (mm): 12.0
Max. Copper Feedstock (mm): 23.0

Aluminium Products:

Aluminium Hollow Profiles -
Maximum Die Circle (mm): 90
Expansion Die Circle (mm): 210
Aluminium Solid Profiles -
Maximum Product Width (mm): 130
Maximum Product Area (mm²): 13,000

Copper Products:

Maximum Extrusion Width (mm): 130
Maximum Product Area (mm²): 2,400

- CONFORM is a Trade Mark of BWE Ltd -

0406

Cold Welding · Continuous Extrusion · Continuous Cladding · Continuous Sheathing

**BWE** Ltd

Beaver Industrial Estate · Ashford · Kent · England
Tel: +44 (0)1233 627736 · Fax: +44 (0)1233 630670
Email: mail@bwe.co.uk · www.conform.com